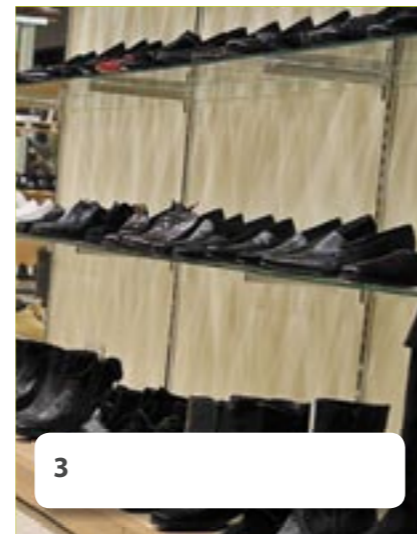


9 He sells stamps and postcards

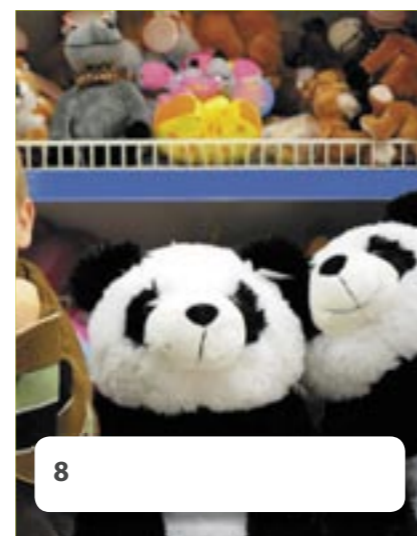
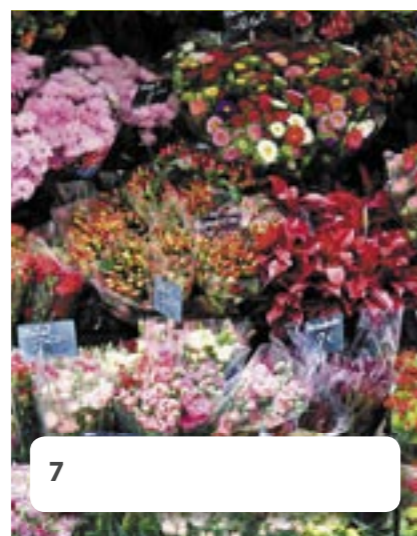
In this lesson: Talk about what your family and friends do
Grammar: **Present simple: first and third person**

Introduction

1 Work with a partner. Write the names of the shops on the pictures.



- bookshop
- cafe
- chemist
- flower shop
- post office
- shoe shop
- souvenir shop
- toy shop



2 Look at the receipts below. Which shops in **activity 1** are they from? Write the numbers in the spaces.

5

Espresso	£2.10
Latte	£3.40
NY cheese cake	£5.75
Blueberry muffin	£2.75

Sales tax 5%	£ .70

Total	£14.70

Cash	£15.00

Change	£ .30

6 red roses	£14.00
12 carnations	£21.00

Sales tax 5%	£ 1.80

Total	£37.80

Cash	£50.00

Change	£12.20

Today's Woman Magazine	£7.99
French - English Dictionary	£11.50

Sales tax 5%	£ .97

Total	£20.46

Cash	£25.00

Change	£ 4.54

T-shirt	£14.99
Flag	£5.99
Pen	£2.99

Sales tax 5%	£1.20

Total	£25.17

Cash	£30.00

Change	£ 4.83

Practice

3 a Read about the people. Write where they work, in the spaces.

a
Hi. My name's Brenda. I like reading, so working in a bookshop is perfect.

b Hello. My name's Martin. I meet lots of tourists every day. They buy things on their holiday in my country. I work in a _____

c I'm Debbie. I'm always very busy. People order tea and coffee from me. I work in a _____

d Hello. I'm Greg. I sell stamps and postcards. I work in a _____

e Hi. I'm Vincent. I love the beautiful smells and all the different colours. I work in a _____

f Hi. I'm Sally. I help sick people. I sell medicine. I work in a _____

b CD - 25 Listen and check your answers.

4 Work with a partner. Ask and answer about three people in **activity 3a**.

example - What does Brenda do?
- She works in a... She likes...

5 Read the names of the jobs below. Where do they work? Match the jobs with the places.

job	workplace
a shop assistant	garage
b mechanic	shop
c doctor	office
d housewife	hospital
e office worker	home

Language focus

I work He works	in a shop.	I like He likes I love He loves	the beautiful smells.
I sell She sells	postcards.		
I go He goes	to work every day by train.		

6 Write sentences about the people in **activity 5**. Use the words in the blue box below.

- a A shop assistant serves customers.
- b _____
- c _____
- d _____
- e _____

work on a computer serve customers help sick people
look after a home fix things

Sounding natural

7 CD - 26 Listen to the sentences below.

How do we say the underlined words when we speak naturally?

- a I work in a garage.
- b He works in a restaurant.
- c She works in a hospital.
- d I work in an office.

8 CD - 26 Listen again and practise the pronunciation.

Time to talk

9 a Think about two people you know (a friend, someone in your family). What do they do every day? Make notes.

brother - works in an office, answers the phone...
friend (Tom) - works in a shop...

b Work with a partner.

Ask and answer questions about the people in **activity 9a**.

Make notes about your partner's people.

c Tell the class about your partner.

example Her friend works in a chemist. Her husband works in a post office.

Homework - turn to page 97